



ARROW PHARMATECH

EXPERTISE .SERVICE . INTEGRITY

Complete Environmental Testing Solution

Join us to make the world a better place.....

Reference Catlog



Tel : +91 7400063718 / 21 / 22

URL : www.arrowpharmatech.com

E-mail : arrowpharmatech@gmail.com

kumar@arrowpharmatech.com

service@arrowpharmatech.com

STANDARD FEATURES

UNIQUE FEATURES

- Easy to use
- Low Energy Consumption
- High Temperature Accuracy
- Low water consumption Chambers.

SALIENT FEATURES

- Controlling system - PLC.
- 7" HMI with TFT LCD colour Touch Screen.
- PC Communication via Ethernet.
- PLC base auto tune facility.
- PLC Base Safety cut off.
- User based alphanumeric password protection through HMI.
- Uniform Conditions.
- Data Storage and Recording.
- 21 CFR compliance software.
- GSM mobile alert system.
- Hooter System.
- Complete safety and alarm system.
- Door access security system.
- Web based online remote monitoring.
- Standby Refrigeration & Humidity System.

Models	Material of Construction	
	Interior	Exterior
AP1	S.S. 304 Mirror Finish	G.I. Powder Coated
AP2	S.S. 304 Miror Finish	S.S. 304 Matt Finish
AP3	S.S. 316 Mirror Finsh	S.S. 304 Matt Finish

STABILITY CHAMBER

This is laboratory Humidity / Stability Chamber meant provide a stable Temperature & humidity Condition Environment. The Chambers are designed according to the ICH guidelines and are manufactured to comply requirements in the industries. Stability Testing is an integral part of formulation development. It helps to generate information, which permits well considered proposals to be made for the shelf life of drug substance and products and recommended storage condition.

TECHNICAL DATA

Standard Model(S) : Inside stainless steel & outside mild steel powder coated.

GMP Model (G) : Inside stainless steel & outside mild steel matt polish.

Temp. Range / Accu. : 20° C to 60° C / $\leq \pm 0.2^\circ \text{C}$
Uniformity : $\leq \pm 1.0^\circ \text{C}$

Humidity Range / Accu. : 40% RH to 90% RH
/ $\leq \pm 0.2\%$
Uniformity : $\leq \pm 3.0\%$



Models	Capacity	Internal size in MM	External size in MM	Tray Qty	Tray size in MM	Total
AP/SC-15	150	500Wx400Dx750H	600Wx1100Dx1650H	2	425Wx395Dx30H	3KW
AP/SC-25	250	600Wx400Dx1050	725Wx1100Dx1650H	2	525Wx395Dx30H	3KW
AP/SC-40	400	700Wx500Dx1150H	825Wx1200Dx1750H	3	625Wx495Dx30H	3.5KW
AP/SC-50	500	700Wx600Dx1200	825Wx1300Dx1800H	3	625Wx595Dx30H	3.5KW
AP/SC-60	600	700Wx600Dx1450	825Wx1300Dx2050H	3	625Wx595Dx30H	3.5KW
AP/SC-80	800	700Wx800Dx1450	825Wx1500Dx2050H	4	625Wx795Dx30H	3.5KW
AP/SC-100	1000	800Wx800Dx2050	925Wx1500Dx2200H	4	725Wx795Dx30H	3.5KW

Note : Other Sizes Available on Request.

WALK IN STABILITY CHAMBER

This is laboratory Humidity / Stability Chamber meant provide a stable Temperature & humidity Condition Environment. The Chambers are designed according to the ICH guidelines and are manufactured to comply requirements in the industries. Stability Testing is an integral part of formulation development. It helps to generate information, which permits well considered proposals to be made for the shelf life of drug substance and products and recommended storage condition.

TECHNICAL DATA

Standard Model(S) : Inside stainless steel & outside mild steel powder coated.

GMP Model (G) : Inside stainless steel & outside mild steel matt polish.

Temp. Range / Accu. : 20° C to 60° C / $\leq \pm 0.2^{\circ}$ C Uniformity : $\leq \pm 1.0^{\circ}$ C

Humidity Range / Accu. : 40% RH to 90% RH / $\leq \pm 0.2$ % Uniformity : $< \pm 3.0$ %

Models	Capacity	Internal size in MM	External size in MM	Rack Qty	Tray Qty	Tray size in MM	Total
AP/WSC-600	6000	2000Wx1500Dx2000H	2160Wx2100Dx2200H	4	20	625Wx625Dx30H	7KW
AP/WSC-800	8000	2000Wx2000Dx2000H	2160Wx2600Dx2200H	4	20	850Wx625Dx30H	7KW
AP/WSC-1000	10000	2000Wx2500Dx2000H	2160Wx3100Dx2200H	6	30	725Wx625Dx30H	8KW
AP/WSC-1200	12000	2000Wx3000Dx2000H	2160Wx3600Dx2200H	4	20	900Wx625Dx30H	8KW
AP/WSC-1600	16000	2000Wx4000Dx2000H	2160Wx4600Dx2200H	8	40	900Wx625Dx30H	9KW

Note : Other Sizes Available on Request.



BOD INCUBATOR

This is laboratory incubator meant for general purpose with high degree accuracy, having constant and generative incubation condition. Incubator can be used for providing heated conditions, for exposures necessary for general incubation, bacteriological growth, and cell on tissue culture, pathology labs & other applications with economy & are simple in operations which make it easy to handle & use.

Duly electro polished stainless steel wire mesh tray with intervals of $\frac{1}{2}$ "height adjustment for better sample storage. Heavy duty outer insulated door installed with imported hinges and lock for easy operation and inner glass door with latch to observe samples without disturbing the set condition.

TECHNICAL DATA

Standard Model(S) : Inside stainless steel &
outside mild steel powder coated.

GMP Model (G) : Inside stainless steel &
outside mild steel matt polish.

Temp. Range : 5°C above ambient to 60°C

Accuracy : $\leq + / - 0.2^{\circ}\text{C}$

Uniformity : $\leq + / - 1.0^{\circ}\text{C}$



Models	Capacity	Internal size in MM	External size in MM	Tray Qty	Tray size in MM	Total
AD/BO-15	150	500Wx400Dx750H	600Wx1100Dx1650H	2	425Wx395Dx30H	1.5KW
AD/BO-25	250	600Wx400Dx1050H	725Wx1100Dx1650H	2	525Wx395Dx30H	1.5KW
AD/BO-40	400	700Wx500Dx1150H	825Wx1200Dx1750H	3	625Wx495Dx30H	2KW
AD/BO-50	500	700Wx600Dx1200H	825Wx1300Dx1800H	3	625Wx595Dx30H	2KW
AD/BO-60	600	700Wx600Dx1450H	825Wx1300Dx2050H	3	625Wx595Dx30H	2KW
AD/BO-80	800	700Wx800Dx1450H	825Wx1500Dx2050H	4	625Wx795Dx30H	2KW
AD/BO-100	1000	800Wx800Dx2050H	925Wx1500Dx2200H	4	725Wx795Dx30H	2K

PHOTO STABILITY CHAMBER

This is photo stability chamber meant for Photo stability chamber should be specifically designed to perform UV and visual light exposure to samples as per standard Guidelines. This unit should have light and temperature control through an easy to use colour touch screen interface. The chamber should have uniform light distribution and high intensity levels to allow quick response for forced degradation testing. The functions of the chamber should be fully controlled via PLC with feature such as alarms for aging lamps, auto - switch off of UV lights upon door opening etc. it should also have specular reflective surfaces to provide uniform UVA and VIS light reflection and to maintain proper spectral power distribution.



Duly electro polished stainless steel wire mesh tray with intervals of $\frac{1}{2}$ "height adjustment for better sample storage. Heavy duty outer insulated door installed with imported hinges and lock for easy operation and inner glass door with latch to observe samples without disturbing the set condition.

OTHERS



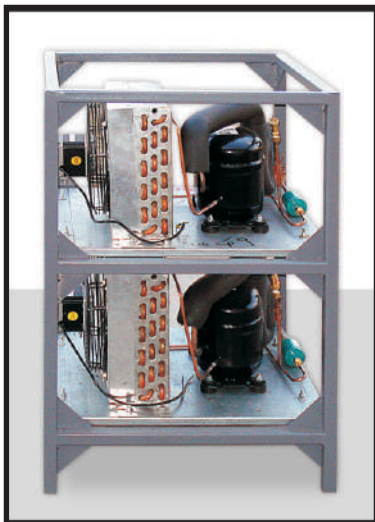
Sampling/Dispensing Booth(RLAF)



LAF(Vertical/Horizontal)



Pass Box(Dynamic)



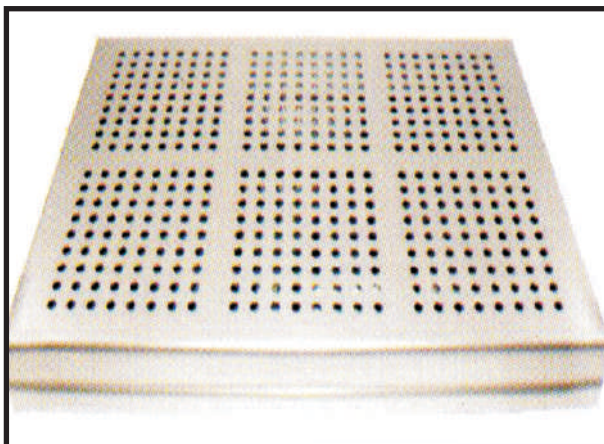
Standby Refrigeration



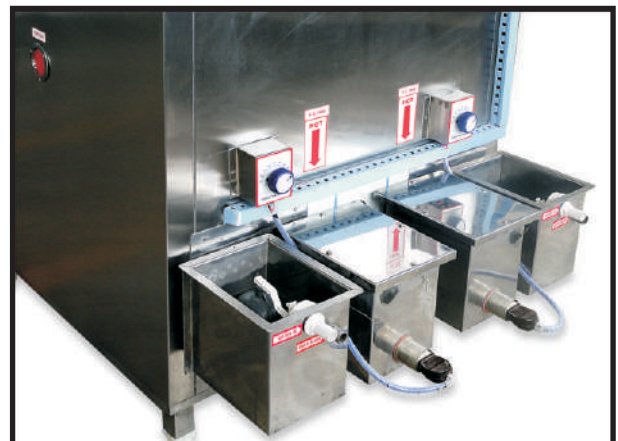
Racks



Wire Mesh Tray

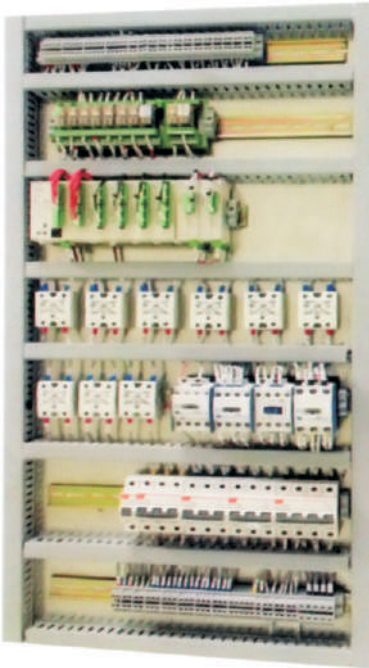


Perforated Tray



Standby Steam Tank

PLC BASE CONTROL SYSTEMS



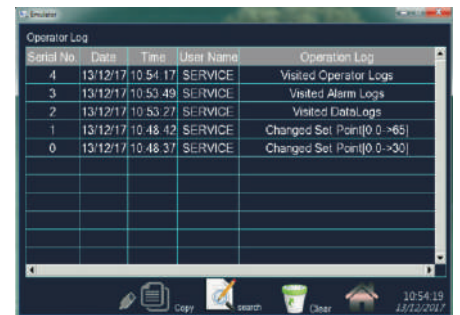
- Controlling system - PLC
- PC Communication via Ethernet.
- PLC base auto tune facility.
- User based alphanumeric Password Protection through HMI
- Stand alone 7.0" HMI with TFT LCD Colour touch Screen
- PLC Base Safety cut off.
- PLC Based SMS Alert.



Default Display



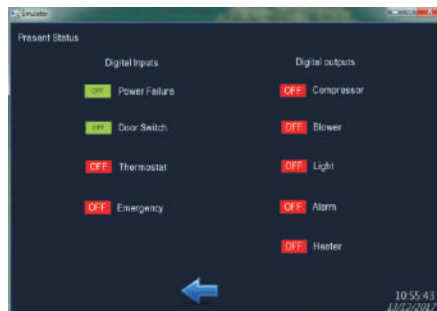
Alarm Log



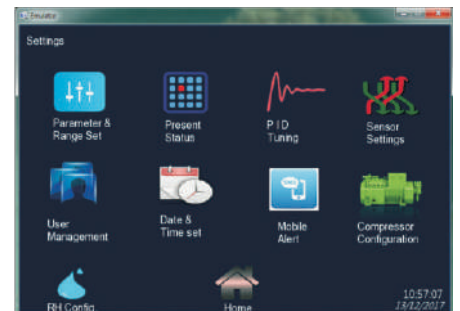
Operator Log



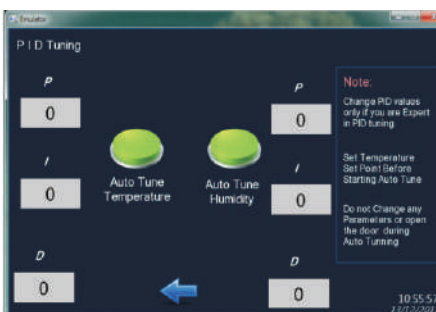
Safety Cutoff



Active Status



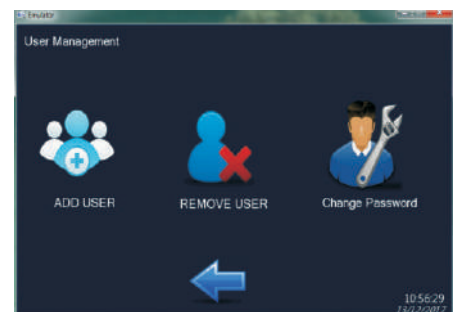
Setting



Auto Tune



Compressor Setting



User Management

SSDAS SOFTWARES

WEB Based SSDAS V1.0 Software is developed as a complete solution for online monitoring and recording data to meet CFR part 11 Compliance

Key Features

- Real Time Reading (Master Temp & Humidity, Scanner, Alarm & Event Dashboard)
- User Based alphanumeric & special characters password.
- User Group (Created by Admin only)
- PLC Base SMS Alert & Software base Report generator
- First Time Login mandatory password change
- Account block after five wrong password attempts
- Password Reset from Admin
- Data Backup and Restoration
- Selectable Password Expiry
- Database Backup Reminder
- Company Logo on all Report



SMS Alert

Tabular Reports (PDF)

- Master Offline Analysis
- Scanner Offline Analysis
- MKT Analysis Report
- Event Report
- Alarm Report
- Audit Report
- All Temp. And RH lower and higher cut off event report
- User Login Report
- Parameter setting change Audit report (e.g. Set point, PF)

Graphical Report (PDF)

- Master Temperature
- Master Humidity
- Scanner Offline Temperature
- Scanner Offline Humidity

REPORTS



ARROW PHARMATECH Event And Alarm Report

For The Period 29-Apr-2016 14:10:22 To 30-Apr-2016 15:10:22

Date/Time	Chamber	Event	Remark
29-Apr-2016 17:29:22	APEPL/QC/01	Raw power OFF	
29-Apr-2016 17:30:30	APEPL/QC/01	Raw power OFF	
29-Apr-2016 17:30:32	APEPL/QC/01	Raw power OFF	
29-Apr-2016 17:30:32	APEPL/QC/01	Raw power OFF	
29-Apr-2016 17:31:04	APEPL/QC/01	Steam Generator-A Faulty	
29-Apr-2016 17:31:04	APEPL/QC/01	High Temperature Thermostate ON	
29-Apr-2016 17:31:04	APEPL/QC/01	Door open	
29-Apr-2016 17:31:04	APEPL/QC/01	Raw Power OFF	
29-Apr-2016 17:31:04	APEPL/QC/01	Low Temp Temperature Thermostate ON	
29-Apr-2016 17:31:04	APEPL/QC/01	Steam Generator-B Faulty	



ARROW PHARMATECH Master Offline Analysis

Equipment ID-Name APEPL/QC/01 - HUMIDITY CHAMBER

For The Period 29-Apr-2016 14:10:22 To 30-Apr-2016 15:10:22

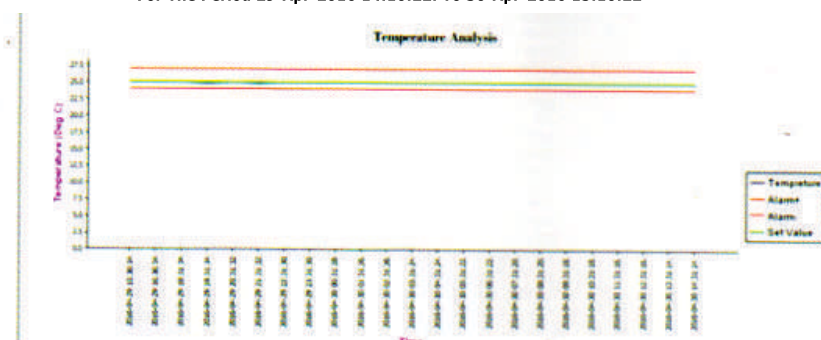
Temperature in °C, Relative Humidity in %RH, Time in HH:MM:SS			
Temperature Acceptance Limit : +/-2.0		Humidity Acceptance Limit: +/-5.0	
Max Temperature : 25.1		Max Humidity : 60.5	
Min Temperature : 24.9		Min Humidity : 59.5	

Date & Time	Temperature		Humidity	
	PV	SV	PV	SV
29-Apr-2016 15:36:54	25.0	25.0	60.0	60.0
29-Apr-2016 16:36:54	25.0	25.0	60.1	60.0
29-Apr-2016 18:31:34	25.0	25.0	60.3	60.0
29-Apr-2016 19:31:34	24.9	25.0	60.8	60.0
29-Apr-2016 20:31:32	25.0	25.0	60.5	60.0
29-Apr-2016 21:31:32	24.9	25.0	60.2	60.0
29-Apr-2016 22:31:30	25.0	25.0	60.1	60.0
29-Apr-2016 23:31:30	25.0	25.0	60.9	60.0
30-Apr-2016 00:31:28	25.0	25.0	60.5	60.0
30-Apr-2016 01:31:26	25.0	25.0	60.0	60.0
30-Apr-2016 02:31:26	25.0	25.0	60.2	60.0
30-Apr-2016 03:31:24	25.0	25.0	60.6	60.0
30-Apr-2016 04:31:24	25.0	25.0	60.7	60.0
30-Apr-2016 05:31:22	25.0	25.0	60.3	60.0
30-Apr-2016 06:31:22	25.1	25.0	60.0	60.0
30-Apr-2016 07:31:20	25.0	25.0	60.8	60.0
30-Apr-2016 08:31:20	25.0	25.0	60.7	60.0
30-Apr-2016 09:31:18	25.0	25.0	60.0	60.0
30-Apr-2016 10:31:18	25.0	25.0	60.1	60.0
30-Apr-2016 11:31:16	25.1	25.0	60.4	60.0
30-Apr-2016 12:31:16	25.0	25.0	60.9	60.0
30-Apr-2016 13:31:14	25.0	25.0	60.8	60.0
30-Apr-2016 14:31:24	25.0	25.0	60.8	60.0



ARROW PHARMATECH

For The Period 29-Apr-2016 14:10:22 To 30-Apr-2016 15:10:22



CONTROLLERS BASED DATA RECORD

SERVICES

All Kind of Chambers

- Annual Maintenance Contracts - Comprehensive and Semi-Comprehensive
- Up-gradation of PLC Control Systems and Components
- Up-gradation of Software
- Capacity and Resource Planning
- Power Consumption Studies for Maximizing Efficiency
- Calibration and Validation
- Customization
- Documentation
- SOP's operation, calibration, validation & Maintenance
- Spare Part & Accessories for All type of Make Chambers

We are also committed to our customers with :

- Quality of Services
- Timely Service
- As we have grown over the years, the prime commitment of our experienced team of engineers has been, and continues to be "Excellence"
- Excellence in engineering knowledge and
- Excellence in the service support.

CONTACT FOR SALES / SERVICE

+91 74000 63721
kumar@arrowpharmatech.com

+91 74000 63722
service@arrowpharmatech.com



ARROW PHARMATECH

EXPERTISE .SERVICE . INTEGRITY

Product List

21 CFR Part 11 Compliance Software

- Walk-in- Stability Chamber
- Walk-in- BOD Incubator
- Walk-in- Cold Chamber
- Stability Chamber
- Cold Chamber
- BOD Incubator
- Photo stability chamber
- Autoclave (Vertical & Horizontal)
- Ultrasonic Sonicator
- Dispensing /Sampling Booth
- Laboratory Oven
- Hot Air Oven
- Vacuum oven
- Water Bath
- Muffle Furnace
- Bacteriological Incubator
- Deep Freezer
- Hot Plate (Rectangular & Circular)
- Pass Box (Static & Dynamic)
- Laminar Air Flow

Our Pride Customer



Add.: C-004, Vijaya Tower., D.V. Marg, Vitawa, Thane (W) - 400 605. India

Web : www.arrowpharmatech.com E-mail : arrowpharmatech@gmail.com